

Ken Hewlett, B.A.



Skills

- Trustee Services
- Complex site project coordination and management
- Inter-agency and inter-client communications and facilitation
- Project controls management and analysis
- Consent Decree and other agency document negotiations
- Client representation
- Public relations
- Agency and contract negotiations
- Technical expert management and oversight
- Business operations

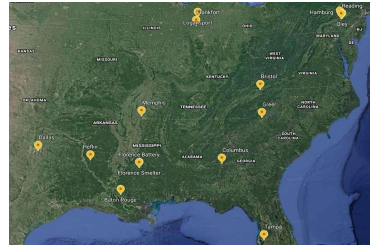
Environmental Trust Experience

Coeur d'Alene and Work Trust, Coeur d'Alene, Idaho



Project Director, Responsibilities include managing day-to-day Trust operations and overseeing financial and strategic remediation efforts at the Bunker Hill Mining and Metallurgical Complex, one of the largest Superfund sites in the U.S., spanning 1,500 square miles. Ensures effective management of remediation efforts with substantial budgets while adhering to federal and state regulations. Collaborates with the EPA, state agencies, the Coeur d'Alene Tribe, and local stakeholders to address complex challenges, stabilize contamination and support long-term environmental and community health.

Exide Environmental Response Trust



Trustee, responsible for a portfolio of 16 former battery manufacturing, recycling, and lead smelting facilities previously owned and operated by Exide Technologies, across 10 states, in EPA Regions 3, 4, 5, and 6. For each of these sites, on behalf of the Trust, Mr. Hewlett leads efforts to implement environmental actions, sell Trust assets including real and business personal property, communicate with regulators, fulfill Consent Decree obligations, and carry out administrative and property management functions. Mr. Hewlett manages a nationwide team of contractors and vendors on a wide variety of tasks, including design and implementation of corrective actions, demolition, operation of wastewater treatment and groundwater extraction and treatment systems, and landfill management. In his efforts to further the interests of the Trust, he has also met with and made presentations to local elected officials, state agency senior officials, and EPA regional senior managers.

Mississippi Phosphates Corporation Environmental Trust, Pascagoula, Mississippi



Providing Trustee services for a CERCLA former phosphate fertilizer manufacturing site on the Bayou Casotte in Pascagoula, MS, and working closely with Trust beneficiaries at EPA Region 4, the US DOJ, and MDEQ. Duties included day to day management of the Trust, sale of salvageable site assets, coordination of demolition of a sulfuric acid plant, and navigating complicated legal, administrative, and technical Trust obligations. Mr. Hewlett also developed an opportunity that resulted in a mooring agreement with a local barge company, providing substantial operating revenue to the Trust. Led a Trust team that was able to sell the property, negotiating and working with the buyer as well as interacting, reporting, and negotiating with pre-petition lenders. This sale relieved the Trust of approximately \$20MM of environmental liabilities.

Ken Hewlett

Vice President, Trustee

B.A. Geology

Rice University, 1987

Focused Experience

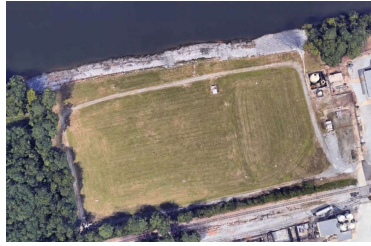
- Environmental Trustee
- Design and construction oversight
- Landfill operations
- In situ heating
- Operations cost optimization
- Client reserve assessment and planning
- Agency and vendor team building
- Seismic stability assessments procurement and management
- Emerging compounds investigation
- Brownfield redevelopment
- Media interaction
- Meeting facilitation
- Resource procurement
- Contracting Strategy
- Multiparty intra-group interaction, negotiation
- PCB site operations
- DNAPL treatment

Ken Hewlett (continued)



Kenneth Hewlett
Vice President, Trustee

Maxus Environmental Response Trust



Trustee responsible for overseeing the operations, maintenance and monitoring of a site in Holt, Alabama. The Site is located on approximately 10 acres of land and consists of a closed impoundment (slurry wall and multi-media cap); a groundwater treatment plant; down-gradient monitoring wells; an up-gradient monitoring well and a small office trailer.

Representative Major Projects

Oil Superfund Site, Monterey Park, California



Mr. Hewlett was the Engineering Manager and Project Coordinator responsible for the implementation of the CD-3 remedy, including pre-design, design, construction and operation of landfill gas extraction and destruction systems, landfill cover, and extraction and treatment of landfill leachate. Responsible for monitoring progress of the work, assuring integration and coordination and facilitating communication among client, government, and other regulatory and public parties, as well as contractors and consultants. Managed public relations, including preparation of newsletters, public meetings, open houses and media interaction. Successfully avoided adverse publicity by conducting interviews with print, radio and television media for sensitive issues related to neighbors and a high profile local political crisis. Participated in development and negotiation of a Scope of Work for a Consent Decree for \$400,000,000 of remedial services and long-term operations. Subsequently performed optimization studies for long term operations of the site, resulting in significant cost savings. Currently part of the Project Coordination team implementing long term O&M.

BKK Landfill, West Covina, California



Providing technical and strategic expertise to major energy company, related to its PRP obligations at a large hazardous waste landfill site. Duties development of financial analyses, cost evaluation and forecasting for internal reserve requirements, participation in technical meetings with state agency personnel and consultants, participation on various PRP committees involved in project decision-making, financial/investing needs, document review and general technical support.

Glendale Chromium Operable Unit, Glendale, California



Project Coordinator for the Glendale Chromium Operable Unit, a multi-party project located in one of the San Fernando Valley Superfund Sites, and for which a Remedial Investigation of Hexavalent Chromium in groundwater and preparation of a Conceptual Site Model has been completed. Duties included technical work product oversight, liaison with EPA and local agencies, schedule and budget oversight and planning, contractor oversight and client reporting, facilitating negotiations on various issues with EPA, and oversight of field activities.

Former Rosen's Electrical Company Superfund Site, Pico Rivera, California



Project Coordinator for the Former Rosen's Electrical Equipment Company site in Pico Rivera, California. On behalf of Responsible Parties representing California utilities, responsibilities included oversight of OM&M activities related to cap/cover, groundwater monitoring, communication with Responsible Parties, agency interaction including scope discussion/negotiation, oversight of field work, review of engineering/technical reports, preparation of annual reports, cash flow analyses/financial planning.

Ken Hewlett *(continued)*



Kenneth Hewlett
Vice President, Trustee

Sunrise Landfill



Project Coordinator/Group Chair for closed landfill in Michigan. Duties include oversight of a local consultant in their performance of post-closure OM&M, budgeting and financial tracking including financial assurance funds, client reporting, and interaction with the state agency (EGLE).

Cal Compact Site



Provided oversight and expertise on behalf of AIG. The site is a former hazardous waste landfill with complex issues related to remediation, redevelopment and the Clean-up Cost Cap Insurance Policy. Responsibilities included review of cost and scope at policy inception and evaluation of future costs and scope, assisting AIG understand its obligations under the policy, providing support to AIG in its efforts to identify quantify potential cost separations, invoice review, and general technical input in support of

AIG's oversight of the project in its ongoing evaluation of the claim, and field inspections of implementation activities.

Employment History

2020 - Current

PathForward Consulting, Inc., *Senior Project Manager*

Multi-party CERCLA site project management, client representation, environmental custodial trust management, and brownfield redevelopment

2008 - 2020

de maximis, inc., *Project Manager*

Project management, project coordination, and client representation for multi-party CERCLA sites including landfills, regional groundwater basins, oil recycling facilities, and a former oil refinery. Served on the Board of Directors of O&M, Inc., a design/build/operate de maximis affiliate.

2002 - 2008

KPK Holdings, Inc., *Founder and Partner*

Oversaw daily operations of a social networking and event planning business. Duties included revenue tracking and projections, acquisitions, personnel management, marketing.

2000 - 2002

Consultant/Sole Practitioner

Provided environmental expertise and client representation for multi-party landfill sites. Consulting services to landfill redevelopment client.

1993 - 2000

New Cure, Inc., *Engineering Manager and Project Coordinator*

Engineering Manager and Project Coordinator for the Oil Landfill, overseeing implementation of cover, landfill gas, and stormwater erosion control remedies.

1987 - 1992

Environmental Solutions, Inc., *Project Engineer/Geologist*

Project engineer, project geologist, field manager to industrial clients for mining, landfill, USTs, other environmentally impacted properties.